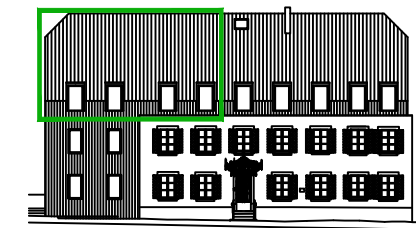
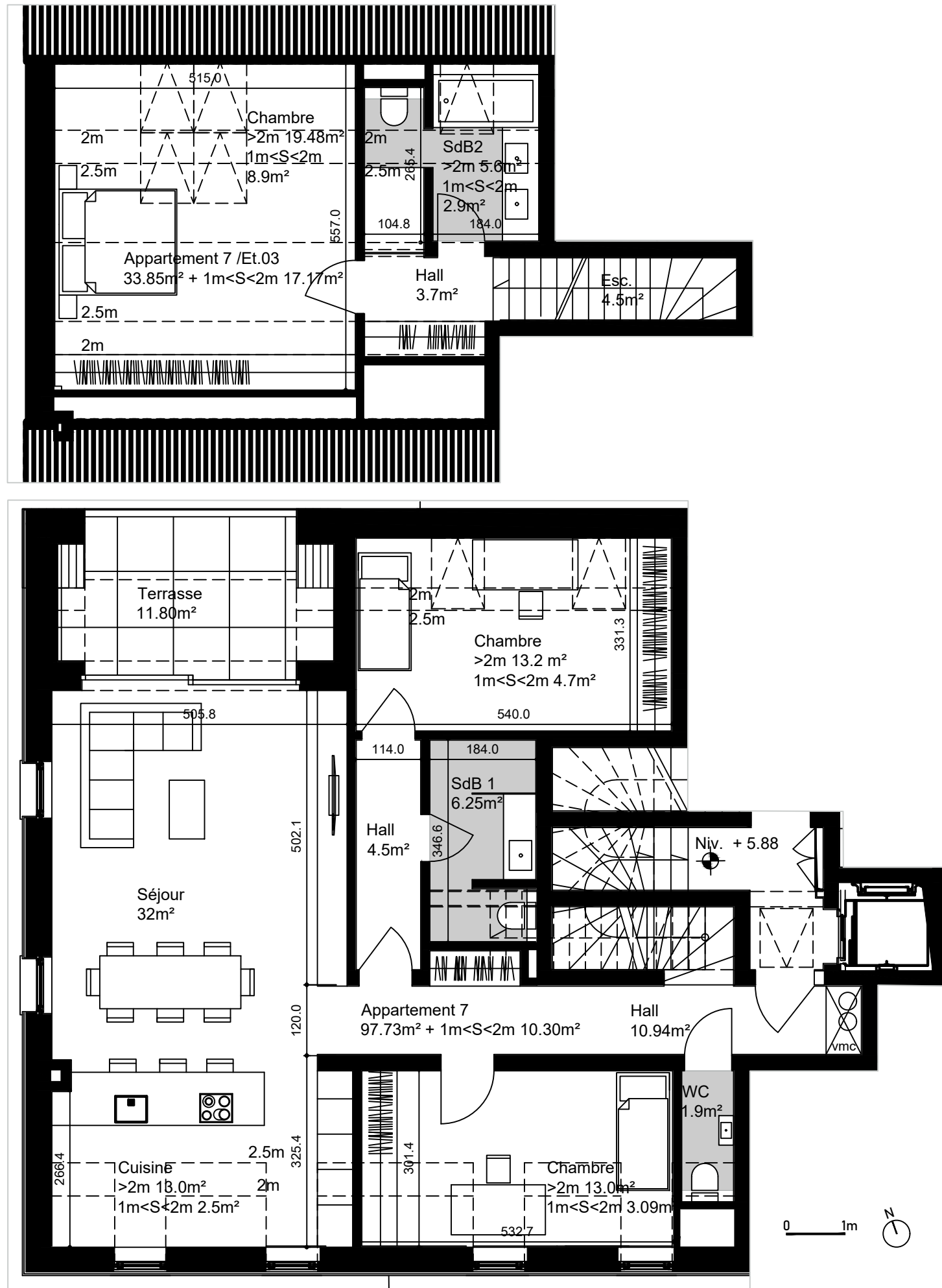
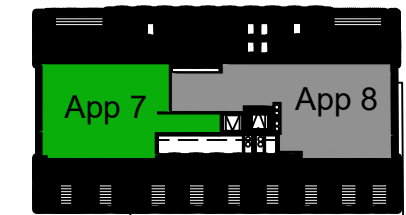


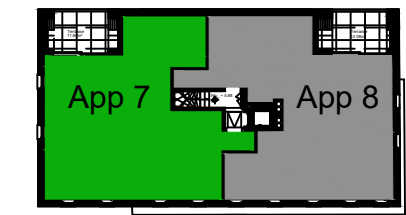
Résidence JP Beckius 43-45, Rue Principale à Sandweiler



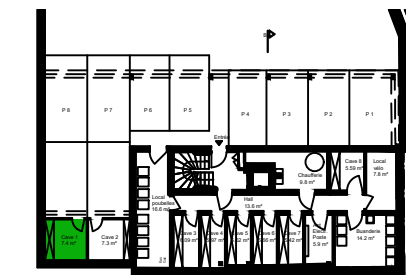
FACADE AVANT



ETAGE +3 / COMBLES



ETAGE +2



SOUS-SOL -1 (CAVES)

APP. 7 / DUPLEX ET. 02/03

SURFACE APPARTEMENT >2m	131.58m ²
SURFACE APPARTEMENT 1m<S<2m	27.47m ² x0.5 ca. 13.74m ²
SURFACE TERRASSE <20m ²	11.80m ² x0.4 ca. 4.72m ²
SURFACE CAVE	7.4m ² x0.5 ca. 3.70m ²

SURFACE VENDABLE 153.74m²

