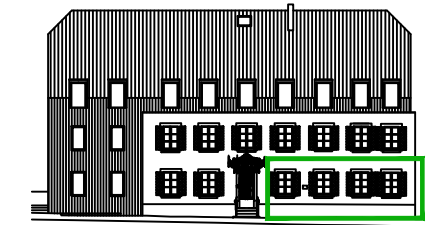
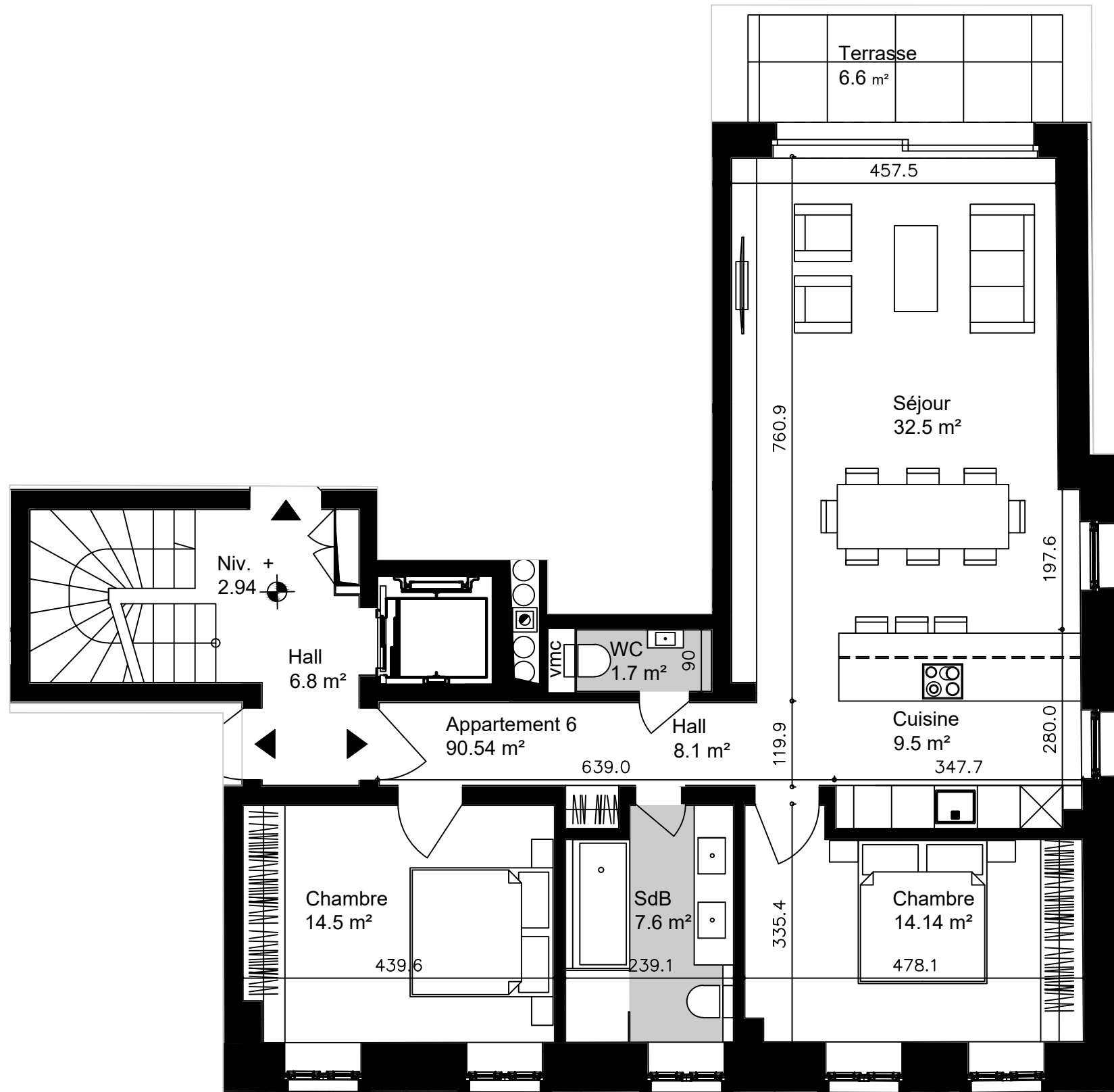
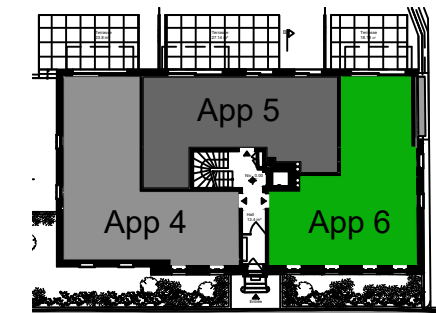


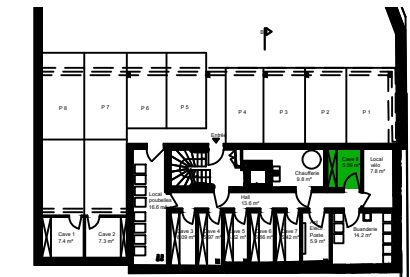
Résidence JP Beckius 43-45, Rue Principale à Sandweiler



FACADE AVANT



ETAGE +1



SOUS-SOL -1 (CAVES)

APPARTEMENT 6 ETAGE 01

SURFACE APPARTEMENT	88.78m ²
SURFACE BALCON <20m ²	6.60m ² x0.4 ca. 2.64m ²
SURFACE CAVE	5.59m ² x0.5 ca. 2.80m ²

SURFACE VENDABLE 94.22m²

