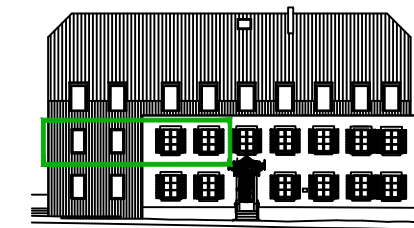
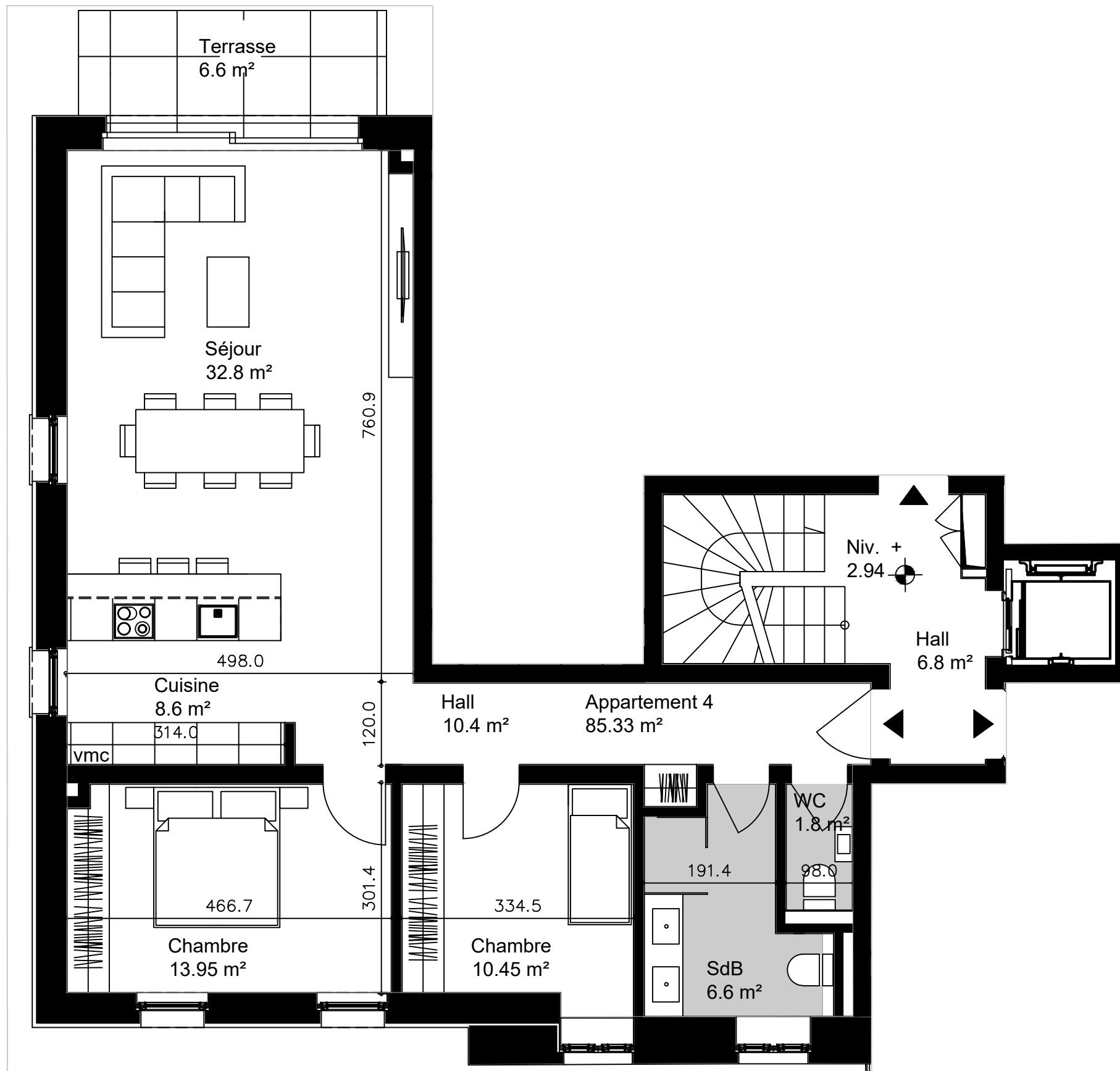
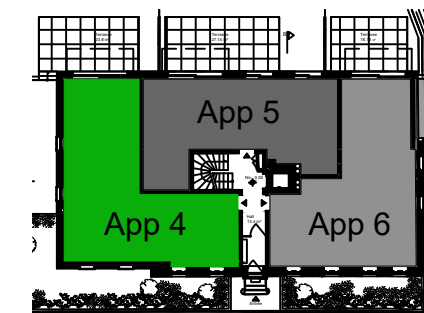


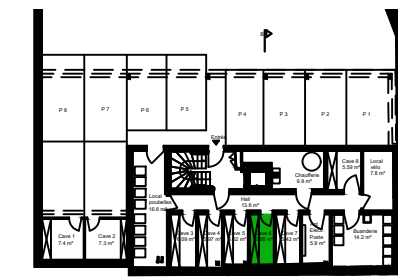
Résidence JP Beckius 43-45, Rue Principale à Sandweiler



FACADE AVANT



ETAGE +1



SOUS-SOL -1 (CAVES)

APPARTEMENT 4 ETAGE 01

SURFACE APPARTEMENT	85.33m ²
SURFACE BALCON <20m ²	6.60m ² x0.4 ca. 2.64m ²
SURFACE CAVE	5.66m ² x0.5 ca. 2.83m ²
SURFACE VENDABLE	90.80m ²

