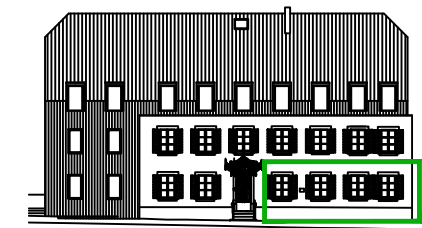
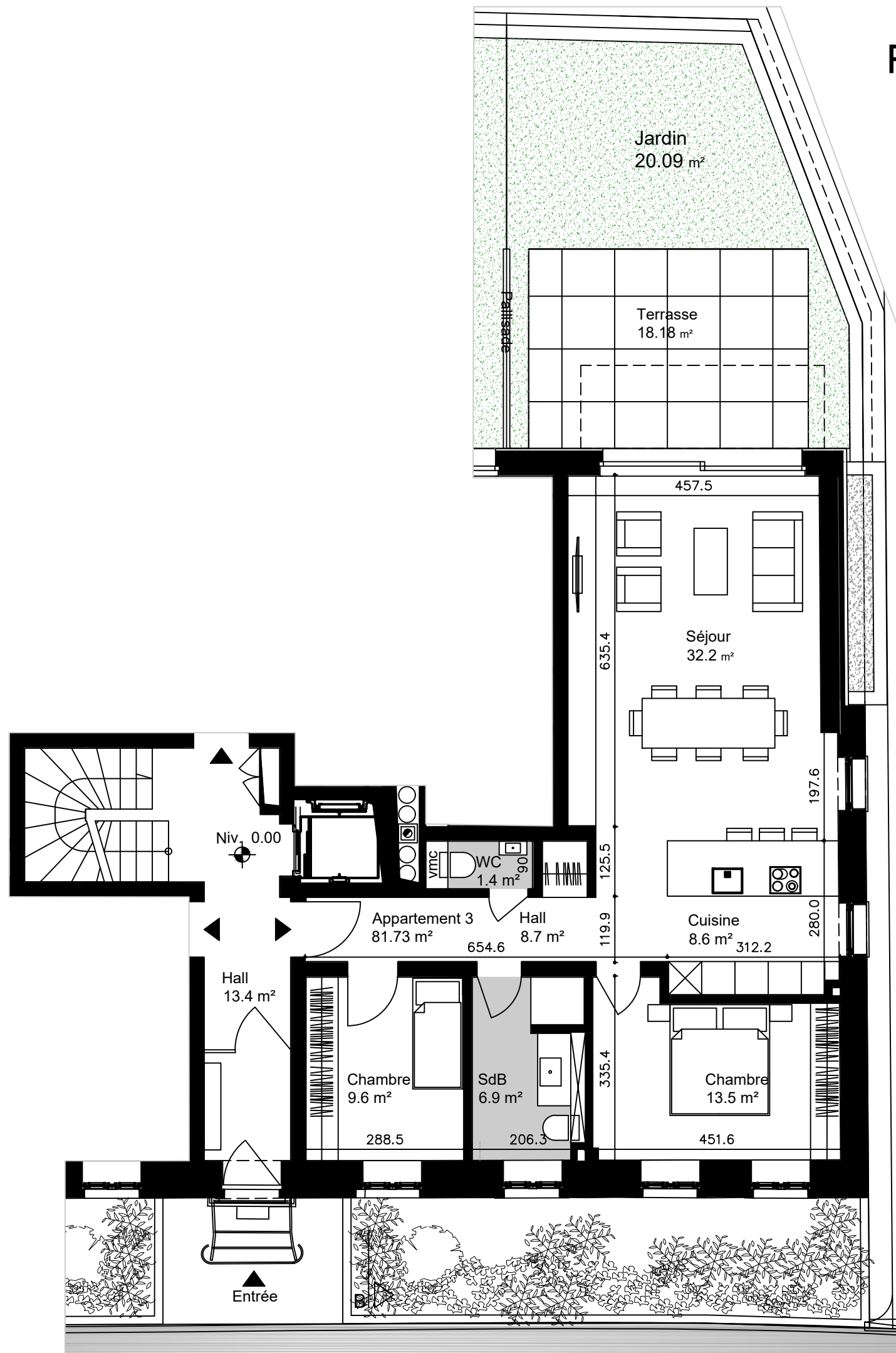
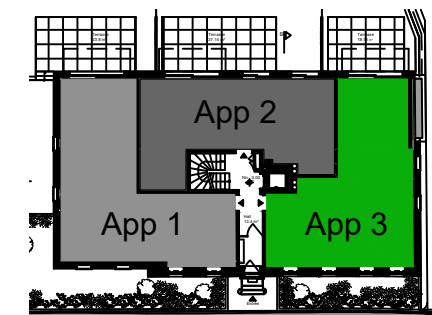


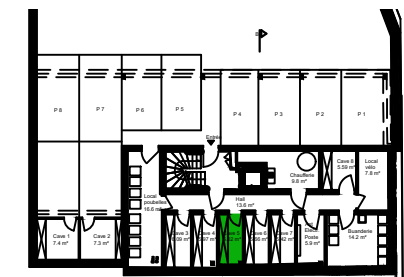
Résidence JP Beckius 43-45, Rue Principale à Sandweiler



FACADE AVANT



REZ-DE-CHAUSSEE



SOUS-SOL -1 (CAVES)

APPARTEMENT 3 RDC

| | |
|------------------------------------|---|
| SURFACE APPARTEMENT | 81.73m ² |
| SURFACE TERRASSE <20m ² | 18.18m ² x0.4 ca. 7.27m ² |
| SURFACE CAVE | 5.62m ² x0.5 ca. 2.81m ² |

SURFACE VENDABLE 91.81m²

