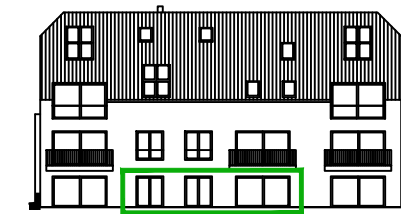
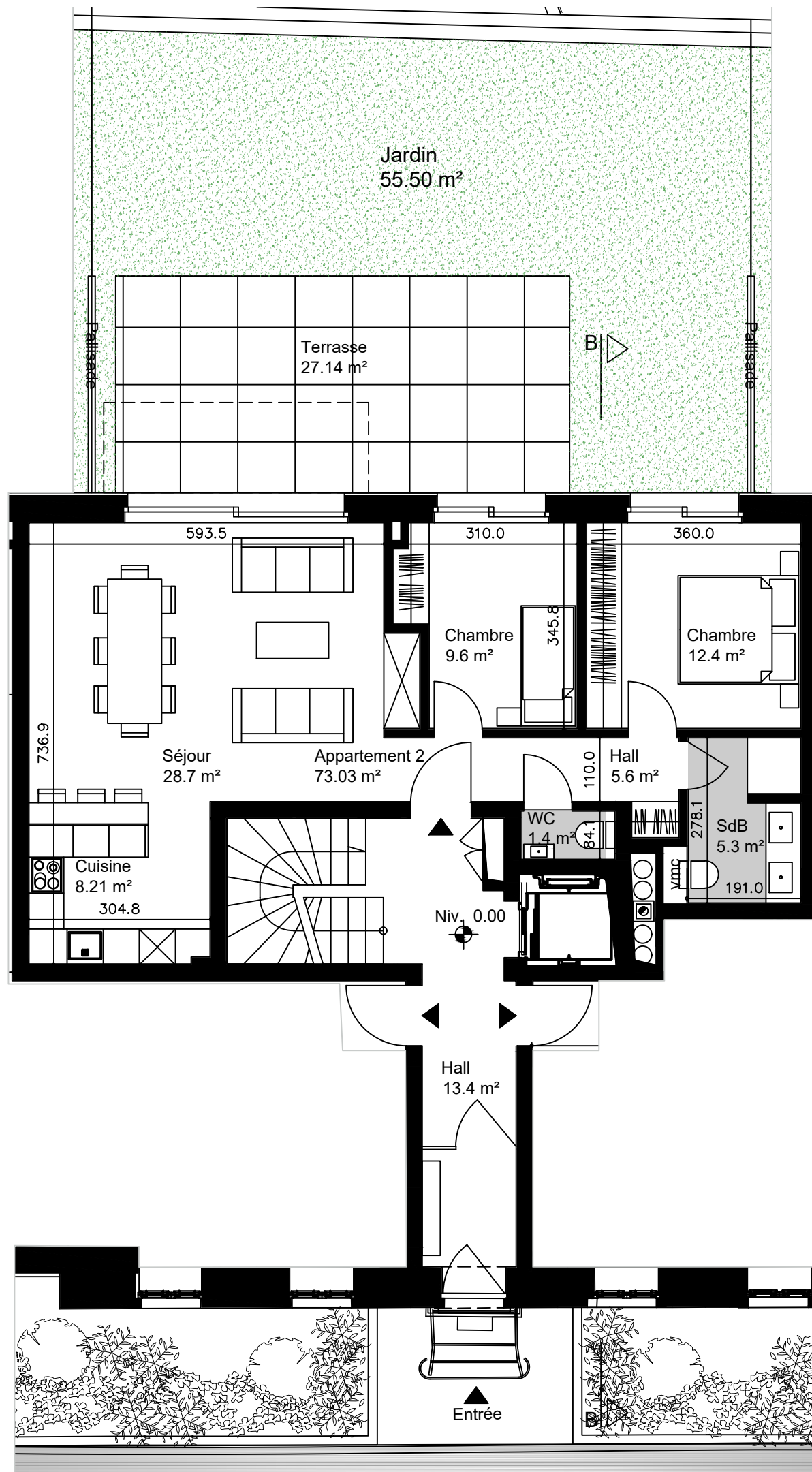
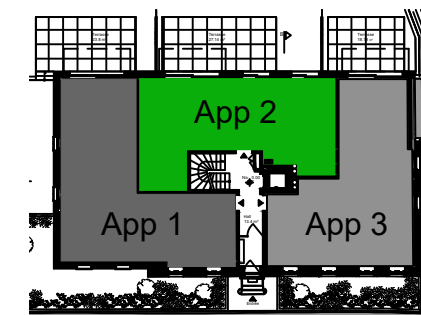


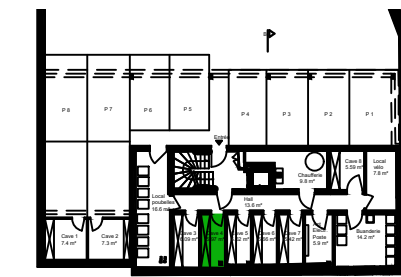
Résidence JP Beckius 43-45, Rue Principale à Sandweiler



FACADE ARRIERE



REZ-DE-CHAUSSEE



SOUS-SOL -1 (CAVES)

APPARTEMENT 2 RDC

SURFACE APPARTEMENT	73.03m ²
SURFACE TERRASSE <20m ²	20.0m ² x0.4 ca. 8.00m ²
SURFACE TERRASSE >20m ²	7.14m ² x0.3 ca. 2.14m ²
SURFACE CAVE	5.97m ² x0.5 ca. 2.99m ²

SURFACE VENDABLE 86.16m²

