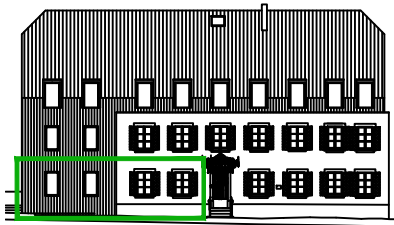
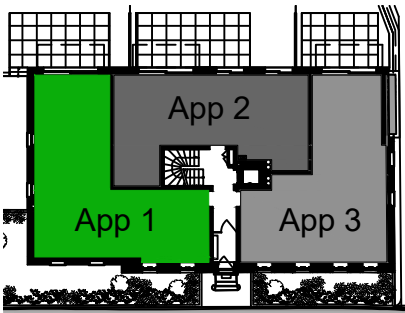


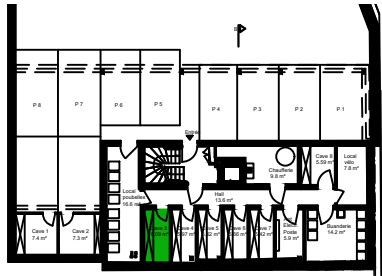
Résidence JP Beckius 43-45, Rue Principale à Sandweiler



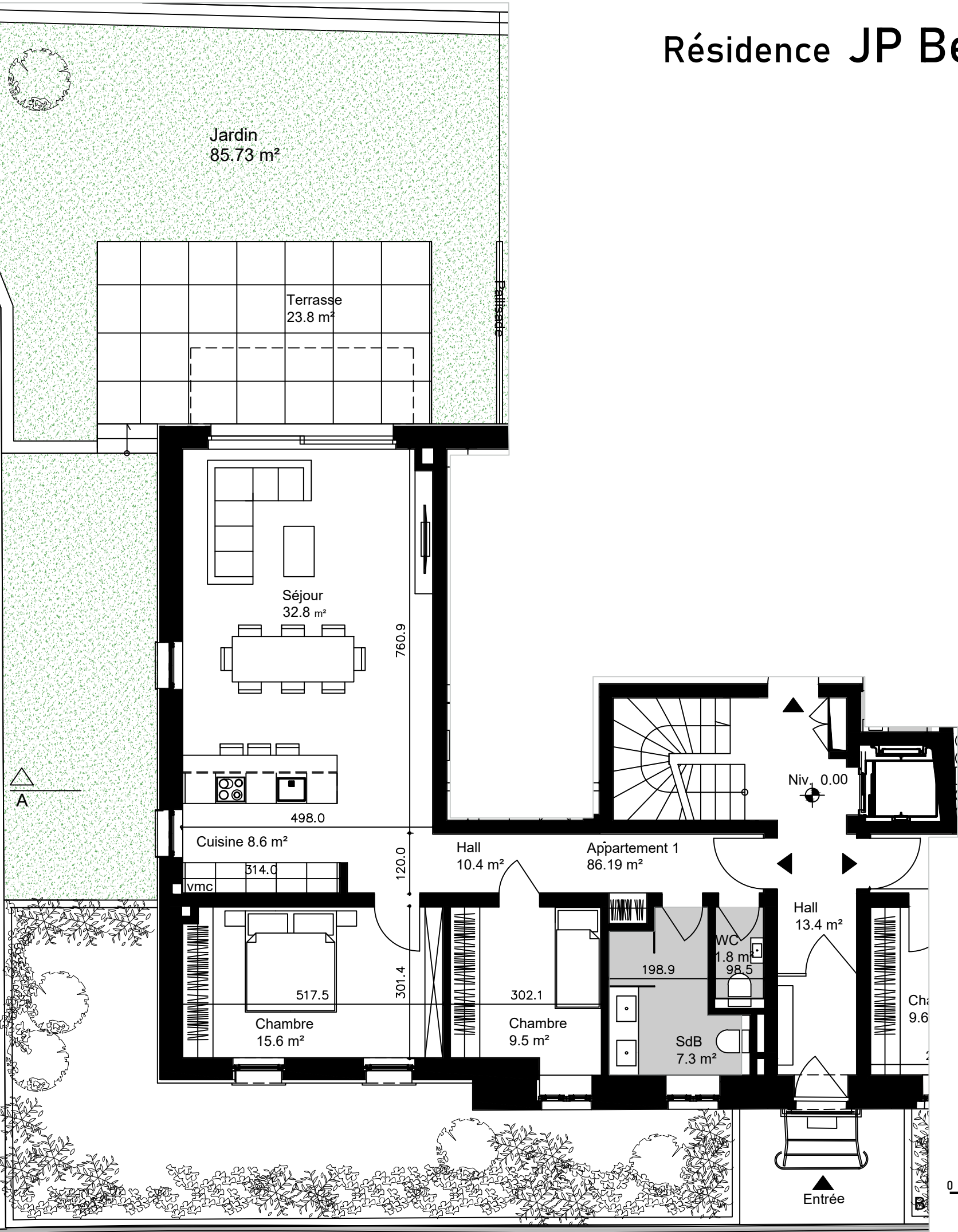
FACADE AVANT



REZ-DE-CHAUSSEE



SOUS-SOL -1 (CAVES)



APPARTEMENT 1 RDC

SURFACE APPARTEMENT	86.19m²
SURFACE TERRASSE <20m²	20.0m²x0.4 ca. 8.00m²
SURFACE TERRASSE >20m²	3.80m²x0.3 ca. 1.14m²
SURFACE CAVE	6.09m²x0.5 ca. 3.05m²

SURFACE VENDABLE	98.38m²
------------------	---------

